

**WE KNOW HOW**  
Since 1977

## Al Mabani Provides Custom Sheet Metal Fabrication For Air-conditioning Industry

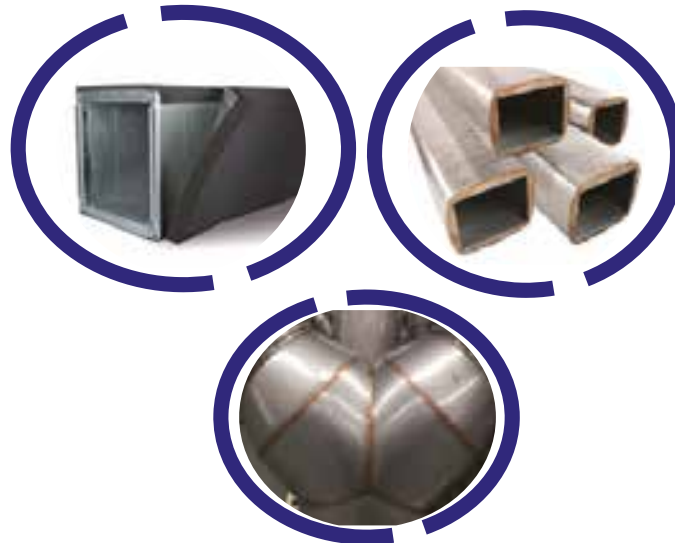
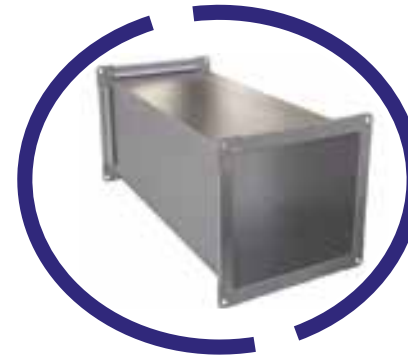
Specialist manufacturer of HVAC Ductwork Since its inception in 1977 in the Kingdom of Saudi Arabia. AL MABANI has expanded rapidly and today it has branches in **KSA, Bahrain** and **Egypt** with headquarters located in **Abu Dhabi, UAE** from 1994 Al Mabani proudly continues to increase the products range manufacturing and distributes its products across Middle East and beyond borders. Al Mabani focuses on meeting the demand of its customers with producing a large volume of daily output of 2,500 m<sup>2</sup> duct per shift with controlled Quality, manufacturing expertise and ongoing training. The Riyadh - KSA plant is located in Industrial Area with over 10,000 square meter production floor area equipped with state-of-the-art CNC machinery and skilled workforce



## WE ARE EXPERIENCED IN ANY AND EVERY TYPE OF HVAC DUCTWORKS INCLUDES.....

### GI DUCT

Duct is fabricated out of hot dipped Galvanized Steel Sheet in accordance with ASTM A 653 with lock forming quality with G90 / 227 (275gms/m<sup>2</sup>.) zinc coating. Duct construction as per SMACNA or DW-142 or DW-144 standards provides superior strength, low leakage rate and vibration free products. With option of internal or external insulation.



### GI DUCT WORK WITH INSULATION & JACKETING

#### ▶ EXTERNAL & INTERNAL INSULATION

Material : Fiber glass insulation  
Rock wool insulation  
Nitrile Rubber insulation  
Poly Olefine insulation

#### ▶ DUCT JACKETING

Material: GI, SS,AL

▶ **FINISH** : Mill Finish, Powder coated  
Epoxy coated



## FIRESAFE NON-COATED FIRE RATED DUCT

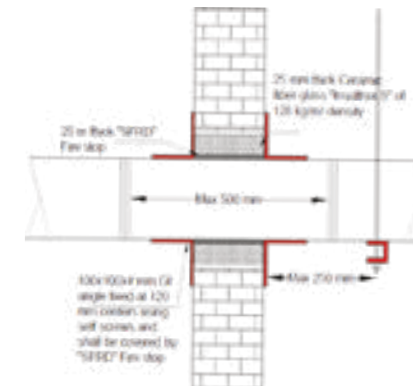
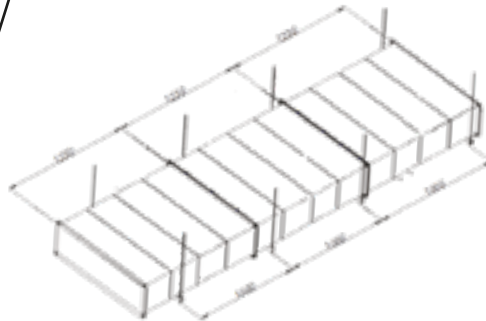
- ▶ Al Mabani non coated fire rated duct system "**FIRESAFE**" is an enormous cost saver for the contractors as opposed to the traditional coated fire ducts while providing a 2 hours or 4 hours of fire rating.
- ▶ Al Mabani fire rated duct system is tested and certified against BS 476: part 24 & EN 1366 for type A & Type B ducts in an approved Laboratory of Saudi Civil Defense "Applus"
- ▶ Al Mabani fire rated ducts available in GI circular & rectangular, MS & SS
- ▶ Al Mabani fire rated accessories such as fire rated Volume damper, Fire rated silencer & access door can be supplied as a complete package for the system.
- ▶ Application include **Smoke Extract, Car park Extract & Pressurization** in both horizontal and vertical orientation.



## Advantage of using non-coated FIRESAFE



- ▶ Most economical fire rated duct system.
- ▶ All ductwork manufactured to SMACNA & DW 144 for high pressure
- ▶ Considerably cheaper than the counter parts.
- ▶ No intumescent painted surfaces to get damaged.
- ▶ In house manufacturing ensures manufacturing quality and consistency.
- ▶ Smooth internal surfaces for cleaning.
- ▶ Approved by Applus.
- ▶ Environmentally Friendly.
- ▶ Comply with ESTIDAMA.
- ▶ Cost effective alternative to the use of fire dampers/smoke dampers and no on-going annual maintenance or inspection costs.
- ▶ Heavy constructed access doors, VCD, sound attenuators for the "FIRESAFE" fire rated duct work system is fully certified for any size of ductwork in the horizontal and vertical plane



**FIRESAFE**  
MABANI

## WELDED DUCTS

### STAINLESS STEEL & BLACK STEEL

Rectangular and round Welded ducts made in both mild steel and stainless steel conforms to NFPA 96 and other industry standards.

**Finish:** Mill finish, red oxide or heat resistant coating.

**Material**

**SS** : 304, 316, 316 L

**MS** : CR4

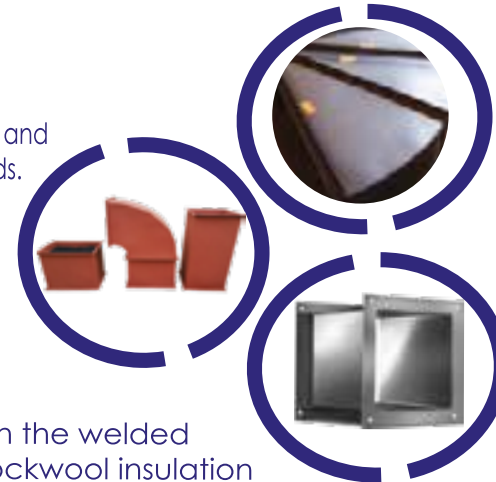
**Thickness** : 0.6 to 6 mm

### Jacketing

We are also specialized in fire rated jacketing on the welded MS or SS duct with high temperature resistant rockwool insulation

### ALUMINUM DUCT

Duct is fabricated out of Aluminum sheet of Alloy 1100 / Equal grade of sheets either Plain type or Stucco embossed type with Hemmed "S" & Drive "C" cleats or flanged type transverse joints.





## CIRCULAR DUCT SYSTEM



### SPIRAL DUCT

- ▶ The round spiral duct made with lock forming quality GI sheet complying with ASTM A 653 & Z275 coating.
- ▶ Standard length of spiral duct is 4000mm custom length available as per request.
- ▶ Spiral ducts can be made in various diameter from 100 mm to 1500 mm and in double wall with insulation.
- ▶ Al Mabani Spiral duct construction complies with the SMACNA & DW 144 standards.



### DOUBLE WALL SPIRAL DUCT

- ▶ Double wall spiral duct available with external fiberglass or rubber insulation and metal jacketing.
- ▶ The jacketing or cladding can be made in aluminum, galvanized sheet or stainless-steel sheet
- ▶ Fiber glass insulation for double wall as standard.
- ▶ Al Mabani double wall Spiral duct construction complies with the SMACNA & DW 144 standards.

## FIRE & SMOKE DAMPERS

### FIRE DAMPERS

**UL** listed and civil defense approved Fire dampers with a fire rating of 1 & half hours and 3 hours .Fire dampers are passive fire protection products used in heating, ventilation, and air conditioning (HVAC) ducts to prevent the spread of fire inside the ductwork through fire-resistance rated walls and floor.



### COMBINATION FIRE SMOKE DAMPER

- **UL 555 & UL 555S** Classified combination fire smoke damper used in dynamic smoke management system and can be used in a 2 or 4 hours walls or floors . It meets NFPA 90A , **UL 555** & **UL 555S** Operation & Dynamic closure for Vertical & Horizontal mount with airflow on both sides rated:





## SILENCER & LOUVERS

- ▶ Al Mabani design and fabricate duct silencers in MS, SS & Aluminum.
- ▶ Acoustic software based design.
- ▶ Our silencers are tested at SRL Laboratories UK
- ▶ We make all kind of silencers-round, rectangular, Elbow and Cross Talk.



### LOUVERS

- ▶ Al Mabani design and fabricate all kind of louvers such as fresh & exhaust air louvers, sand trap louvers and acoustic louvers.
- ▶ Our louvers are tested in BSRIA UK.
- ▶ Louvers can be fabricated in AL, GI & SS
- ▶ Louvers with bird screen, insect screen and washable filters are available.
- ▶ Flush mounted and wall mounted type louvers.



### ACCESS DOOR

- ▶ The access doors are quick , easy and economical option where access is required in the duct for inspection & maintenance purpose.
- ▶ Access doors available in GI, Aluminum , MS & SS with thermal insulation.
- ▶ Cam lock type, Hinge type & wing nut type access doors available on request.



TEST & APPROVALS



## OUR PARTNERS





## PRODUCTS RANGE

### HVAC INDUSTRY

- ☐ FIRE RATED DUCTS
- ☐ GI/SS/MS/AL DUCTS
- ☐ PRE-INSULATED DUCTS
- ☐ CIRCULAR/ SPIRAL DUCTS
- ☐ SOUND ATTENUATOR
- ☐ DAMPERS/ ACCESS DOOR
- ☐ AIR OUTLET
- ☐ CLADDING



NOTES

AL MABANI

AL UMUMIYYAH



## PRODUCTS RANGE

### TRADING

- ☐ STEEL COILS
- ☐ STEEL SHEETS
- ☐ PRE-INSULATED PANELS
- ☐ PRE-INSULATED ACCESSORIES
- ☐ INSULATION
- ☐ SLIP ON FLANGES / CORNER



NOTES

AL MABANI

AL UMUMIYYAH

AL MABANI Offers a variety of **IMMEDIATE DELIVERY OPTIONS**,  
**Special requests are welcomed**



ISO 9001 & 14001 CERTIFIED COMPANY

Tel: +966 5444 828 05  
Riyadh, KSA  
Email: Sales@almabani.net

Tel: +971 2 5544605  
Abu Dhabi, UAE  
Email: Sales@sasco.net

**Contact Us**



**Company Profile**

