

Alyamitech

Brochure 2022



Address: 7661-Al Khalidiya Ash Shamaliyah Dist,
Unit No 3, Dammam, Saudi Arabia
Phone: +966 560466106, +966 562925237, +966
546334766 Email: info@alyamitech.com
Web: www.alyamitech.com





Saudi Aramco E-Reference No. 0003204

Registration Approval Letter

October 28, 2020

Attention : ALI MANEA AL YAMI TRADING EST.

CR Number : 2050121966

Country : Saudi Arabia

We are pleased to inform you that ALI MANEA AL YAMI TRADING EST. is now registered in the Saudi Aramco Supplier Management System under Vendor Code No. 10067450, provided your company continues to meet all relevant Saudi Arabian and Saudi Aramco standards.

This registration, however, should not be construed as a commitment by Saudi Aramco to procure from you. Being registered as a supplier only grants your company the opportunity, along with other registered sources, to respond to requests for submitting proposals in accordance with Saudi Aramco's established policies and procedures. All procurement instruments including but not limited to service contracts, purchase agreements, or purchase orders will be issued based on the name and address included in your commercial registration (CR), as stated in your Supplier Registration.

Saudi Aramco wishes to remind you that being recognized as a supplier carries with it serious obligations and responsibilities to act in a legal and ethical manner. We wish to remind you of the Saudi Aramco Supplier Code of Conduct (SCOC) which you acknowledged. Failure to abide by the principles set forth in the SCOC can result in adverse actions being taken by Saudi Aramco against you including suspension of you as a supplier. Saudi Aramco also expects each of its suppliers to satisfy each of the requirements of any procurement instrument which might be placed and to act responsibly and reliably as a supply chain supplier.

Material Suppliers should apply for Saudi Aramco Supplier Portal access by forwarding a request to portal-registration@aramco.com. The Supplier Portal is the main electronic business tool used between Saudi Aramco and its suppliers and serves to improve the flow and accuracy of key supply chain information.

For further information or assistance please contact the Saudi Aramco Supplier Help Desk by forwarding a request to SupplierHelpDesk@aramco.com or via the unified call center +966 (13) 874-2222.

Dawoud Suliman Al Nuwais, Supervisor
Supplier Registration Unit
Supplier Relationship Management Div

It is the responsibility of the supplier to update Saudi Aramco Supplier Registration Profile through Ariba for the following:

1. Change of Name / Commercial Registration Number / Address / Owner(s)
2. Any change of the supplier location
3. Discontinue supply of approved commodities (9COMs and 9CATS)

This is an electronically generated letter by Saudi Aramco. To verify Supplier approval status, please contact Supplier Help Desk at supplierhelpdesk@aramco.com

Riyadh International Convention & Exhibition Centre

ALYAMITECH AT HVACR EXPO 2022



Index

TABLE OF CONTENT

| | |
|------------------------------------|----|
| WINTERS INSTRUMENTS PRODUCTS | 5 |
| FLAMCO PRODUCTS | 7 |
| MAPLEF VALVES | 8 |
| ENVOTEC PRODUCTS | 9 |
| GREASE INTERCEPTORS | 10 |
| PLUMBING ACCESSORIES | 12 |
| MIFAB PRODUCTS | 13 |
| MAPLEF PRODUCTS | 14 |
| MEP TAGS & SIGNS | 16 |
| AIR CURTAINS | 18 |
| PRV PRODUCTS | 19 |
| ENVOTEC PRODUCTS | 20 |
| VIMCO PRODUCTS | 21 |
| X-CHEM PRODUCTS | 23 |
| WILO PUMPS | 24 |
| PROJECT REFERENCES | 26 |

OUR RANGE OF PRODUCTS



flowconME



Guages & Instruements products

WINTERS INSTRUMENTS

WINTERS INSTRUMENTS
MANUFACTURER OF INDUSTRIAL INSTRUMENTATION

Winters Instruments is a Canadian based company with line of products in pressure gauges, pressure transmitters, pressure switches, diaphragm seals, thermometers, RTDS, thermocouples, thermometers and thermowells.



PFQ GLYCERIN FILLED GAUGE



PTR TAMPER-RESISTANT GAUGES



SMV MINI BALL VALVE



SSP SYPHON



TAG HVAC THERMOMETERS



TIM SERIES THERMOMETER



TBM BI-METAL THERMOMETER



TIW INDUSTRIAL THERMOWELL



SNV NEEDLE VALVE

Gauges & Instruments products

WINTERS INSTRUMENTS

WINTERS INSTRUMENTS
MANUFACTURER OF INDUSTRIAL INSTRUMENTATION



**WINSMART
PRESSURE TRANSMITTER**



**COMMERCIAL DIFFERENTIAL
PRESSURE SWITCH**



**LY16 WINSMART PRESSURE
TRANSMITTER**

Heating, Cooling and System products

FLAMCO GROUP



We're the distributors for Flamco Group products in Saudi Arabia. **Flamco Group** offers products in system components for heating, cooling and potable water installations as well as fixing technologies.



FLAMCO CLEAN SMART



FLEXFILLER PRESSURIZATION
EQUIPMENT



MILD STEEL DOSING POTS



FLAMCO CLEAN SMART F



FLAMCOVENT CLEAN SMART F



FLAMCOVENT SMART F



FLEXCON M



PSD VACCUUM DEGASSER



AIRFIX A

Actuators, Valves & Flanges

MAPLEF



flowconME

Maplef General Supplier is flow control device manufacturer based in Canada. It makes valves included, gate valves, Strainers, Check Valves, Butterfly valves, Flexible Connectors, Flanges, Fittings and Accessories.

FLOWCONME VALVES

We're the distributors for FlowconME products in Saudi Arabia. **FlowconMe** has products in various valves, actuators, WRAS valves, flanges, fittings categories.



BRONZE CHECK VALVE



**BRONZE GATE VALVE NON-RISING
STEM**



BRONZE Y-STRAINER



**BRASS BIBCOCK WITH
HOSE UNION**



**DUCTILE IRON
SUCTION DIFFUSER PN-16**



**DZR BRASS
DRAINING COCK**



DUCTILE IRON BUTTERFLY VALVE



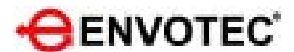
**CAST IRON GATE VALVE
RISING STEM**



BRASS ANGLE VALVE

Butterfly Valves & Actuators

ENVOTEC



Envotec EMD series bi-directional resilient seated butterfly valves designed to provide positive shut-off for liquids using soft back-seat as the seal ring can highly enhance its degree of finish and flexibility. Envotec also makes Quarter Turn Electric Actuators. The EOHQ-series is a range of high quality actuators to control rotary quarter turn valves with an ISO 5211 flange of type F07, F10, F12, F14 and F16.

BUTTERFLY VALES

Envotec Butterfly Valves are available in EMD-W Serief Wafer type, EMD-L Full Lug type, EMD-F Flanged type of Butterfly valves. Its suitable for potable water, HVAC, irrigation in residential, commercial and industrial applications.

FEATURES

- Tight shut off with Low pressure drop
- Suitable for automation with low operating torque and 90 degree operating angle
- On-off or throttling applications



**SERIES EMD-L FULL LUG
BUTTERFLY VALVE**



**SERIES EMD-W WAFER
BUTTERFLY VALVE**



**SERIES EMD-F FLANGED
BUTTERFLY VALVE**



**ELECTRIC ACTUATING
BUTTERFLY VALVE**

QUARTER TURN ELECTRIC ACTUATOR

Envotec offer EOHQ Series Quarter Turn Electric Actuators. The actuators can deliver 50 Nm torque to 2000Nm in a fast and smooth operation. The indicator provides a clear visual inspection of the valve position. The actuator features a manual override and auxiliary limit switches for control purposes.

FEATURES

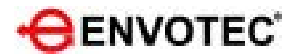
- Compact due to high grade aluminum alloy housing.
- The actuator motor is reversible, high torque and low current design.
- Solid with o-ring for weatherproof.



**ON/OFF TYPE
EOHQ SERIES ACTUATOR**

Electronic Level Relay, Level Sensing Electrodes

ENVOTEC



Envotec manufactures Electronic Level Relay (ELR), Level Sensing Electrodes and Water Tank Level Monitoring Systems. Level Sensing Electrodes are designed for use with all Envotec Level Control Relays. They are available as single electrode or with Level Control Relay.

ELECTRONIC LEVEL RELAY

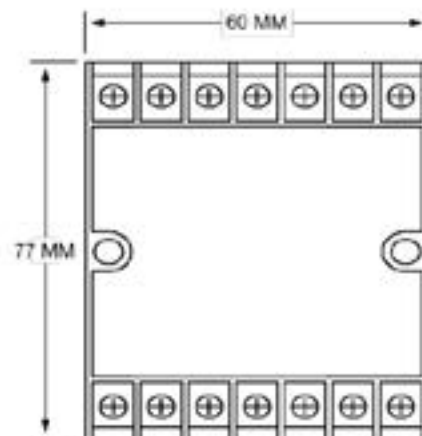
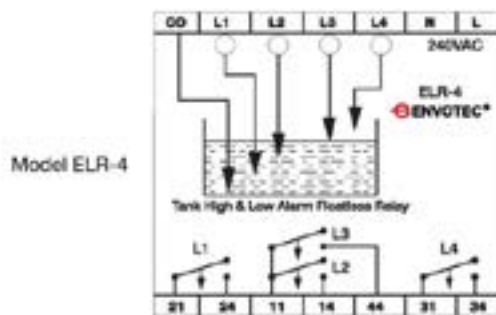
The ELR is an electronic level relay used to sound alarms when the level of a conducting liquid reaches an upper or lower limit by using series of probes. This electronic relay can also be sequenced at liquid levels in the reservoirs as 25%, 50%, 75% and 100%. This relay can also be configured with pumps, solenoid valves, motorized control valves and similar systems.

APPLICATION

This electronic level relay mounted in control panel with required terminals configured to applications to suit project requirements.



**ELR SERIES
ELECTRONIC LEVEL RELAY**



LEVEL SENSING ELECTRODES

Envotec ELR Series Level Sensing Electrodes are designed for use with all Envotec Level Control Relays. They are available as single electrode or with Level Control Relay.

Its available in mouting type Free-Connection via M3 Screw terminal and Electrodes are made from Stainless Steel 316.



**ELP01 LEVEL SENSING
ELECTRODE**



**WATER TANK LEVEL
MONITORING SYSTEM**

Grease Interceptor & Trap Primer

MIFAB



The Prescor pressure reducing valve stabilizes the fluid pressure in a water distribution systems to a preset value. It is used on potable water installations for water supply within buildings according to EN 806-2.

MIFAB MI-100 ELECTRONIC TRAP SEAL PRIMER

Mifab MI-100 is engineered for equal distribution of water to all ports. It's the perfect solution to keep sewer gas from entering the building from seldom used floor drains.

The MI-100 can be located anywhere in the water supply and is engineered to permit the building owner to adjust the frequency and amount of water delivery through a timer and stainless steel solenoid valve.



MIFAB SELF CLEANING INTERCEPTOR

Mifab High-Density Polyethylene Separator has a low weight – compact design, 100 % corrosion free with a limited lifetime warranty and is made in the USA out of seamless, rotationally molded High-Density Polyethylene with 9.5mm uniform wall thickness.

Specification:

MIFAB® BIG-1150-SC HDPE rotational molded grease interceptor with flow rating of 100 GPM and liquid holding capacity of 750 gallons. Unit shall include: 3/8" uniform wall thickness, deep seal trap covered by lid, internal air relief by-pass and 4" no hub inlet and outlet connections.



ENVOTEC



ENVOTEC AUTOMATIC GREASE SEPARATOR

The Envotec automatic grease separator made of high quality plastic High density/Low medium density polyethylene meets the requirements of DIN EN 1825 and DIN 4040-100, which are resistant to acids.

Featuring a one piece design with integrated sludge trap, the separator is suitable for free standing installation. Stability over 20 years has been verified, inlet and outlet connections meet DIN EN 877 and DIN 19535 requirements.



Water Hammer Arrestor & Trap Primer

PLUMBING ACCESSORIES

Alyamitech offers Plumbing Accessories such as Water Hammer Arrestor, Trap Primer, Vacuum Breaker, multi-jet impeller meter and Woltman Turbine Water Meter products. We distribute Plumbing Accessories products from Triage Engineering, Envotech as well as Surgetrol products from Sealtech.



ENVOTEC SAND-MUD
INTERCEPTOR EIG



EVNOTEC EIO OIL
INTERCEPTOR



PRESSURE DROP ACTIVATED
TRAP PRIMER



FLOOR DRAIN



TRIAGE - PISTON TYPE
WATER HAMMER ARRESTOR



SEALTECH SURGETROL SS
BELLOWS WHA TYPE-A



SS TYPE 304 BRASS BODY
VACUUM BREAKER



MULTI-JET DRY TYPE VANE WHEEL
WATER METER



ENVOTEC WOLTMAN
(TURBINE) WATER METERS

Plumbing & Drainage Products

MIFAB USA



Mifab USA manufactures commercial, Industrial Plumbing and Drainage Products. Mifab's Innovative product designs save the installer time and material cost and provides the owner with higher quality cast stainless steel drains and cleanouts for the same cost as the industry standard nickel bronze.



**BIG MAX HDPE
OIL INTERCEPTOR**



**SUPER-1000 SUPER MAX
GREASE INTERCEPTOR**



**F100 ROUND ADJUSTABLE
FLOOR DRAIN WITH FLANGE**



**R1200 LARGE SUMP
ROOF DRAIN**



**T1500-PB 4" INTERNAL WIDTH
CONCRETE CHANNEL**



**BV1210 ANGLE PIT DRAIN WITH
BACKWATER VALVE**



**BARRACUDA 20 DOUBLE CHECK
VALVE BACKFLOW PREVENTER**



**M-500 PRESSURE DROP
TRAP SEAL PRIMER**



**HY-9005-B-NPB ROUGH BRASS
VACUUM BREAKER**

Flexible Connectors

MAPLEF



Maplef General Supplier is flow control device manufacturer based in Canada. It makes valves included, gate valves, Strainers, Check Valves, Butterfly valves, Flexible Connectors, Flanges, Fittings and Accessories.

MAPLEF FLEXIBLE CONNECTORS

Maplef offers Flanged Single Sphere Rubber Bellows, Stainless Steel Flexible Hose with Threaded DZR Brass Coupling, Stainless Steel Flexible Hose with Threaded SS304 Coupling, Flanged Single Sphere Rubber with Control Rods, Flanged Single Sphere Rubber with Control Rods type of Flexible Connectors.

These are available in different sizes suitable for specified pressure ratings. Flexible Hoses are available in PN16 and PN25 ratings.



FLANGED SINGLE SPHERE RUBBER BELLOW, PN16



SS FLEXIBLE HOSE WITH THREADED DZR BRASS COUPLING



STAINLESS STEEL FLEXIBLE CONNECTOR



BRAIDED STAINLESS STEEL FLEXIBLE CONNECTOR



FLANGED SINGLE SPHERE RUBBER WITH CONTROL RODS



THREADED DOUBLE SPHERE RUBBER BELLOW



SS FLEXIBLE HOSE WITH THREADED SS304 COUPLING

Connect FCU & Pressure Independent Control Valves

MAPLEF



Maple General Supplier is flow control device manufacturer based in Canada. It makes valves included, gate valves, Double Regulating Valves, Strainers, Check Valves, Butterfly valves, Flexible Connectors, Motorized Butterfly Valves, Pressure Independent Control valves (PICV), automatic balancing valves, FCU connect, Flanges, Fittings and Accessories.

CONNECT FCU PN25

Features:

- It is a ready to install PN25 rated factory pre-assembled and tested valves supplied along with a removable insulation kit.
- 2 P/T Test Point
- Full Insulation
- 2 Stainless Steel Flexible hoses for connections to FCU
- 3 full port Isolation Ball Valves with extended handles for allowances of insulation (1 for supply, 1 for return & 1 for by-pass)
- For control of flow, there are options available: Maplef PICVs or Two Way Control Valves with On/Off+ Double Regulating Valves or Modulating thermic or Mechanical actuators.



MATERIAL SPECIFICATIONS & DIMENSIONS

| DN | INCH | L | W | H |
|----|------|-------|-------|-------|
| 15 | ½" | 197 | 211 | 117 |
| 20 | ¾" | 212.5 | 233.5 | 130 |
| 25 | 1" | 237 | 261.5 | 135.5 |

All dimensions are indicative.

Actual dimensions may vary.



MAPLEF PRESSURE INDEPENDENT CONTROL VALVES

Available as Maplef Green.0 / Green.1 / Green.2 in size 15-40 mm / 1/2"-1 1/2". The Maplef Green series is a range of pressure independent control valves that are two-way, modulating to accept digital or analog input signals. The valves accept 0(2)-10V, 3-point floating or ON/OFF input signals.



Pipe Markers, Duct Markers, Electrical Identification

MEP TAGS & SIGNS



MEP Tags are essential components of identification of pipes, ducts, scaffoldings, valves, equipment and instruments used in Mechanical, Electrical and Plumbing Industry. From Pipe Identification markers to inventory/ equipment tags and safety signs, we provide different category of labels, signs and markers to HVAC installations, industrial plants, commercial and residential installations.

PIPE MARKERS

Pipe markers are used for indicating pipe fluid type and direction in plumbing and firefighting hoses and reels. Pipe markers are used in Hot Water Supply (HWS), Cold Water Supply (CWS), Soil Pipes, Vent Pipes, Waste Pipes, Rain Water Pipes. In firefighting installation, pipe markers are used for Fire Hose Reel (FHR), Sprinkler Pipe, Wet Riser, Dry Riser.



**PIPE MARKERS PLACED ON
HOT WATER PIPES**



**PIPE MARKERS PLACED IN
HVAC INSTALLATION**



**FIRE FIGHTING EQUIPMENT
PIPE MARKERS**

DUCT MARKERS

Duct Markers are used to identify the air flow and equipment in a ductwork system. Duct Markers with Attached Scored Arrow and Plenum Duct Markers are generally used for various duct installations.

They provide highly-visible color-coded labels make it easy to differentiate between different systems as well as scored arrow markers designate direction of flow. Plenum Duct Markers are available with black texts on metallic grey background.



**PLENUM DUCT MARKERS
ON AIR DUCT INSTALLATIONS**

Tapes, Tags and Signs

MEP TAGS & SIGNS



In MEP installations, Color Banding Tapes, Flow Directional Tapes, Underground Warning Tapes are used. Tags like Valve & Equipment Tags, Asset Identification Tags, Accident Prevention Tags, Engraved Tags are also used for identification and safety of equipment and personal. For Identification Signs, Stainless Steel Signs, Enameled Aluminum Signs, Engraved Plastic Signs, Photo luminescent Signs, Safety Signs and Fence Signs are used.



MEP FLOW DIRECTIONAL TAPES



COLOR BANDING TAPES



UNDERGROUND WARNING TAPES



ENGRAVED PLASTIC
VALVE TAGS



ENGRAVED PLASTIC
EQUIPMENT TAGS



STAINLESS STEEL
TAGS



ACCIDENT PREVENTION TAGS



PHOTOLUMINESCENT SIGNS



EQUIPMENT SIGNS

Air Curtains & Heat Exchangers

VTS, MAXWOR



VTS WING air curtain is a device that aims to create an invisible barrier that separates environments with different air parameters from each other. WING is the new generation device created from a passion for a light and modern design representing characteristics of gliders.

WING PRO INDUSTRIAL AIR CURTAINS

Features:

- Energy Savings: EC motor use even 40% less electrical energy and allow for BMS direct connection.
- Power: Wide air stream, reaches up to 8 meters away from the air curtain.
- Installation: Vertical or horizontal mounting possibility plus easy unit connection.



WING W - AIR CURTAINS WITH WATER HEAT EXCHANGER

Features:

- Heating Power Range: 4 – 47 kW
- Exhaust Power Rate: 1850-4400 m³ /h
- Maximum Air Coverage: 3.7m
- Products: Available in Wing W100W, W150W, W200W Models



MAXWOR HEAT EXCHANGERS



Maxwor is different types of heat exchangers like Gasketed Plate Heat Exchangers, Braided Plate Heat Exchangers, Shell & Tube Heat Exchangers and Finned Tube Heat Exchangers. They also make rubber, metal and fabric expansion joints. Metal expansion joints include AN Type Expansion Joint, AX Type Expansion Joint and LA Type Expansion Joint.



**BRAIDED PLATE
HEAT EXCHANGERS**



**GASKETED PLATE
HEAT EXCHANGERS**



**FINNED TUBE
HEAT EXCHANGERS**

Prescor PRV & Pressure Relief Valves

FLAMCO



The Prescor pressure reducing valve stabilizes the fluid pressure in a water distribution systems to a preset value. It is used on potable water installations for water supply within buildings according to EN 806-2.

PRESCOR PRV

Advantages:

- Comfort and efficiency without noise and vibrations
- Fast and simple pressure setting and commissioning
- Pressure under control in every situation

Technical information:

- Outlet settings (Ps) from 1 to 6 bar.
- Ps value set during testing: 3 bar.
- Maximum working pressure: 25 bar.
- Min./Max. working temperature: 0 °C (excluding ice) / 80 °C.
- Suitable for addition of glycol-based anti-freeze up to 50%.



FLOWCONME BRONZE PRESSURE RELIEF VALVE

FTBPRVW 20 32 100mm Bronze Pressure Reducing Valve from FlowconME. FlowconME offers WRAS Valves like check valves, gate valves, Y strainers, butterfly valves, ductile iron double door valve, iron gate valve and pressure reducing valves.

Specification:

- Pressure rating: PN20
- Working medium: Water, Gas
- BS21 Taper threaded to ISO7 / BS EN10226-2
- Outlet pressure: 0.1-0.4 Mpa
- Hydrostatic Test Pressure
- Shell - 30 bar, Seat - 22 bar



PN20 (15MM 25MM)

WELLMARK PRV

Wellmark offers W2601 and W2602 Threaded Safety Relief Valves. These valves are for general purpose gas and air services, and are recommended for over-pressure protection on separators, compressors, pressure vessels, heater-treaters, gathering and transmission lines.

Features:

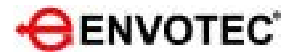
- Choice Of Multiple Orifice Sizes
- ASME Coded: "UV" Section VIII Air/Gas
- Enhanced Guided Lift System: Optimum Performance
- Trim Option: Soft Seat, Metal-to-Metal



WELLMARK W2601 PRV

Air Release Valves, Flanges, Expansion Joints

ENVOTEC



Founded in 1991, Envotec design and manufacture dependable plumbing, heating, and industrial flow control products of the highest standards. The company specialize in Control Systems, Interceptors, lead-free plumbing valves, brass valves, flanges, thermostatic mixing valves, and flexible connectors.



**AIR AND VACUUM VALVE
EAL-400**



**AUTOMATIC
AIR RELEASE VALVES EPL 10**



**AUTOMATIC AIR VENT
SERIES E900**



**DIELECTRIC UNIONS
DUFF**



**EREJ-DSF DOUBLE SPHERE FLANGED
RUBBER EXPANSION JOINT**



**SINGLE SPHERE FLANGED
RUBBER EXPANSION JOINT**



**DIELECTRIC FLANGE
PIPE FITTINGS E300**



**DIELECTRIC FLANGE WITHOUT
COMPANION FLANGE**



**STAINLESS STEEL
DIELECTRIC FLANGE E300**

Vibration and Noise Control

VIMCO



Vibration Management Company is an Houston, Texas based company specializing in making vibration and noise control equipments for industrial companies around the world. The product categories include vibration isolators pads, restrained spring mounts, free standing mounts, rubber isolators, expansion joints and more.



**HNSA NEO-SPRING
HANGER**



**VIMCO HOUSED SPRING
MOUNT**



**SEISMIC SPRING
MOUNT-1 DEFLECTION**



**RUBBER-IN-SHEAR DOUBLE
DEFLECTION HANGER**



**80LB FREE
STANDING SPRING MOUNTS**



**ZX AX HOUSED SPRING
MOUNT**



**AVHM ANTI-VIBRATION
HANGER MOUNT**



**VFDC VIBRO-SORB
FLEXIBLE DUCT CONNECTOR**



**VTPT-02
TEST PLUG**

Expansion Joints & Rubber Mounting Pads

VIMCO



Vimco also manufactures rubber expansion joints, rubber foam pad, rubber mounting pads, control rods, stainless steel expansion joints and more.



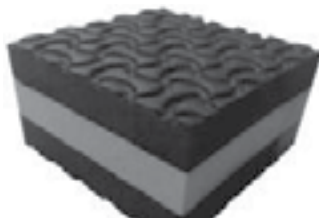
**FCS RUBBER EXPANSION JOINTS,
SINGLE BELLOW CONNECTION**



**FCT-H RUBBER EXPANSION JOINTS,
TWIN BELLOW, FLANGE CONNECTION**



**FCU-T RUBBER EXPANSION JOINTS,
SCREWED CONNECTION**



**3RFP GREEN TRI-
PLE-CORE RUBBER FOAM PAD**



**FMD RUBBER-IN-SHEAR
MOUNT**



**SRMP-XE STEEL-RUB-
BER MOUNTING PAD**



**EASY-CUT RUB-
BER MOUNTING PAD**



**CRU CONTROL ROD
UNIT**



**JF-500-T STAINLESS
STEEL EXPANSION JOINTS**

UL and Non UL Adhesives

X CHEM



X Chem offers Adhesives and Coatings for Ducting & piping applications, Canvas cloth insulation, PIR & XLPE insulation and Fiberglass insulation Rubber insulation. It also offer anti-fungal sealants for HVAC systems.



FIRE RESISTIVE ADHESIVE



UL CLASSIFIED ACRYLIC SEALANT



PIR DUCT ADHESIVE



**NON FLAMMABLE SOLVENT
BASED ADHESIVE**



**UL CLASSIFIED WATER BASED QUICK
TACK DUCT ADHESIVE**



**UL CLASSIFIED SYNTHETIC
ELASTOMER ADHESIVE**



**SOLVENT BASED ADHESIVE FOR
RUBBER INSULATION**



**LOW VOC SYNTHETIC ELASTOMER
BASED ADHESIVE**



**MAGIK 5220 ADHESIVE
FOR RUBBER INSULATION**

Pump products

WILO



Wilo offers multistage pumps, inline pumps, end suction pumps, split case pumps, inline circulatory pumps with flow rate rangin from 25USGPM to 4000USGPM with height upto 800feet. In addition, we also supply other brand of pump likes crane pums as we



**WILO HELIX HIGH EFFICIENCY
MULTISTAGE PUMP**



**WILO HELIX VERTICAL
MULTISTAGE PUMP**



**WILO IL INLINE CENTRIFUGAL
CIRCULATORS PUMP**



**WILO IPL
INLINE PUMP**



**WILO MVI
MULTISTAGE PUMP**



**WILO NL BASE MOUNTED
END SUCTION PUMP**



**WILO SCP
SPLIT CASE PUMP**



**WILO STATOS GIGA
INLINE CIRCULATOR PUMP**



**WILO
MULTIVERT MVI**

Flexible Pump Connectors

MAPLEF



Flexible Pipe Connectors allows reduction stress between pump and connecting pipe due to expansion and contraction during the normal operation of the pump. It prevents and isolates transfer of noise and vibration and provides support for adjustment in alignment between stationary pump and pipe connecting the pump. MapleF Flexible Pipe Connectors are available in size 1/4" to 24" I.D.



SIZES

Available in 1/4" I.D. - 24" I.D.

Pump Connectors with 3/4" offset and connectors with open overall length are also available. We also make custom size pump connectors.

ADVANTAGES

- Ready to Ship product inventory
- Long lasting product
- Extended Shelf life
- Stable Pressure Control
- Support misalignments corrections
- Improved Temperature & PSI Capacity

APPLICATIONS

- Mechanical Rooms
- Boiler Systems
- Pump Systems
- Industrial Pumps
- Return & Discharge Lines



PUMPS WITH FLEXIBLE CONNECTORS IN USE

Residential, Commercial and Industrial Projects

Project References

PROJECT NAME: ICONIC STATION 3B2

PRODUCTS SUPPLIED : WINTERS INSTRUMENTS



PROJECT : RIYADH METRO STATIONS 1A1,1F8,1C1,1B3

PRODUCTS SUPPLIED : WINTERS GAUGES & AGF VALVES



PROJECT : DALLAH HOSPITAL

PRODUCTS SUPPLIED : VIMCO VIBRATION ISOLATORS & WINTERS GAUGES

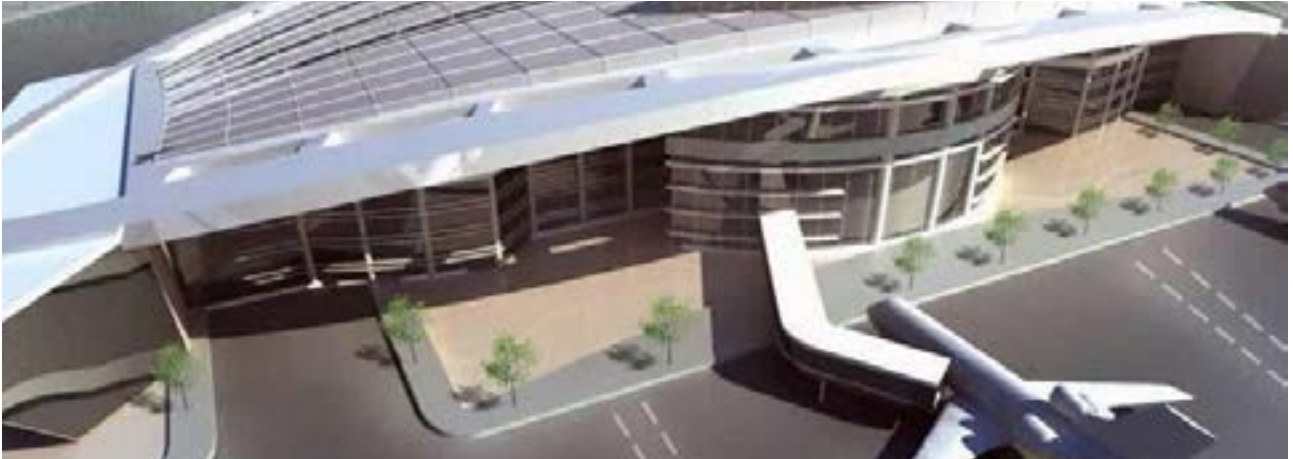


Residential, Commercial and Industrial Projects

Project References

PROJECT NAME: ARAR AIRPORT

PRODUCTS SUPPLIED : WINTERS INSTRUMENTS GAUGES



PROJECT NAME : GRANADA MALL RIYADH

PRODUCTS SUPPLIED : WINTERS INSTRUMENTS GAUGES



PROJECT NAME: SAUDI ELECTRICITY COMPANY HQ

PRODUCTS SUPPLIED : WINTERS INSTRUMENTS GAUGES



Our services

BMS & HVAC SOLUTIONS

Alyamitech Team undertakes BMS projects and we have qualified engineers to implement the projects. We can also install, test, calibrate and commission all the materials we sell and through this service we provide Premium and Quick solutions.

Heating, Ventilation, and Air Conditioning (HVAC) are technology products important for the climate control of indoor environment. HVAC solutions are utilized in industrial plants, residential units, vehicles, industrial equipment and many more application. HVAC installation, testing and usage have to be done through following adequate guidelines provided by the manufacturers. Certification and calibration needs to be checked ensure the quality of instruments and equipment adhere to ISO and other quality certifications.



”Premium and quick solutions”

ISO CERTIFICATED PRODUCTS

Alyamitech strives to provide ISO and industry standard certified products for our customers. Winters Instruements company has ISO 9001:2008 Certification for provision of Industrial instruemenation for the measurement of pressure and temperature. Flamco Group providing range of products on air seperators, air vents, expansion vessels, fixing technology products has ISO 9000:2015 certification on design, assebmly, commission and supply of sealed system equipment and flue pipe, Supply and assembly of Flamco industrial support systems.



Certificate of Registration

ALI MANEA ALYAMI TRADING EST.

7661-AL KHALIDIYA ASH SHAMALIYAH DIST UNIT NO.3 DAMMAM,
SAUDI ARABIA

has been assessed and Certified by Otabu Global Services Pvt. Ltd.
as meeting the requirements of:

ISO 9001:2015

Quality Management System

For the following scope of activities:

**WHOLESALE & SUPPLY OF HYDRONICS EQUIPMENTS, PRESSURE &
TEMPERATURE INSTRUMENTS**

Issue No :01

Date of Certification: 02 November 2020

1st Surveillance Due: 01 November 2021

Revision No () : NA

2nd Surveillance Due: 01 November 2022

Certificate Expiry: 01 November 2023

(subject to the company maintaining its system to the
required standard)

Certificate No:- 1102Q40120

To Verify this Certificate please visit at www.otabuglobal.com




Dr. Anita Gupta
(Managing Director)

Otabu Global Services Private Limited

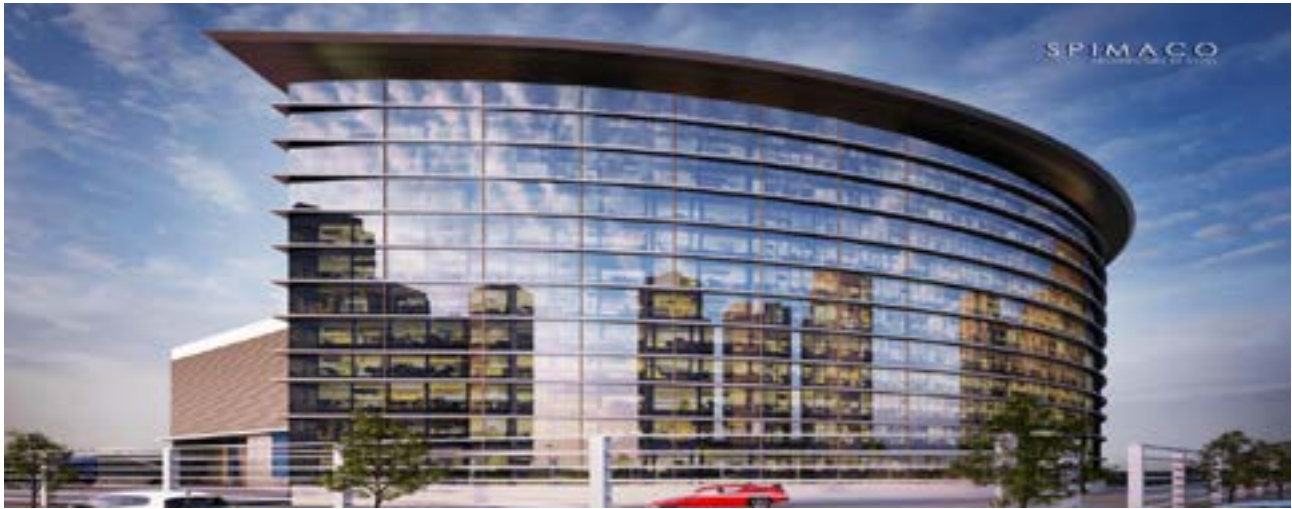
Accredited by IAS (International Accreditation Service, USA)
Validity of this certificate is subject to annual surveillance audits done successfully
This Certificate Of Registration Remains The Property of Otabu Global Services Private Limited and Shall be Returned Immediately Upon Request
Email: info@otabuglobal.com / otabuglobal@gmail.com Website: www.otabuglobal.com

Residential, Commercial and Industrial Projects

Project References

PROJECT: SPIMACO

PRODUCTS SUPPLIED : FLAMCO HYDRONICS



PROJECT: CMA TOWER

PRODUCTS SUPPLIED : WINTERS INSTRUMENTS GAUGES



CONTACT US

Mohammed Ibrahim

Sr. Tech. Product Engineer

P: +966 54633 4766

E: ibrahim@alyamitech.com

Moideen Suhail

Technical Sales Engineer

P: +966 56292 5237

E: suhail@alyamitech.com

Mohammed Nibras

Sales Engineer

P: +966 59177 3040

E: nibras@alyamitech.com

Rishan Ahammed

Sr. Tech. Product Engineer

P: +966 58185 6564

E: rishan@alyamitech.com

Ali Manea Alyami Trading Est

7661-Al Khalidiya Ash Shamaliyah dist, Unit no 3, Dammam, Saudi Arabia Phone: +966 56046 6106

Email: info@alyamitech.com Web: www.alyamitech.com

